



THERMOGRAPHIC INSPECTION SERVICES FOR BUILDINGS

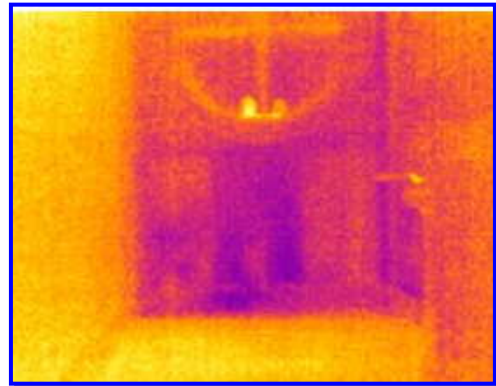
Wynn L. White Consulting Engineers, Inc. is pleased to announce we have added infrared thermography to our arsenal of expertise and equipment to better serve our customer's needs. Thermographic imaging is an extremely efficient and accurate tool to assist us in locating and documenting sources of moisture within buildings. These instruments, used in conjunction with our experience, allow us to find moisture sources fast. Finding and repairing moisture sources quickly is key to preventing moisture related problems such as mold and other indoor air quality issues.

ABOUT THERMOGRAPHIC IMAGING

Thermographic imaging is a non-intrusive method of testing materials for temperature differences. These differences in temperature are invisible to the naked eye. Thermography is the use of an infrared imaging and measurement camera to "**see**" and "**measure**" thermal energy emitted from an object. Thermal or infrared energy is light that is not visible because its wavelength is too long to be detected by the human eye; it's the part of the electromagnetic spectrum that we perceive as heat. Unlike visible light in the infrared world, everything with a temperature above absolute zero emits heat. Even very cold objects, like ice cubes, emit infrared. The higher the object's temperature, the greater the IR radiation emitted. Infrared allows us to see what our eyes cannot.

Applications

- **Building Envelope Inspections**
- **Building Energy Assessments**
- **Roof Moisture Surveys**
- **Electrical Inspections**
- **Water Restoration - Inspection and Monitoring**
- **Leak Detection**



Water intrusion below window

BUILDING ENVELOPE INSPECTIONS

Infrared thermography is one of the most effective non-destructive analysis techniques available. This technology allows for infrared photography of moisture in interstitial wall space that may be beyond the detectable capabilities of standard moisture meters and visual inspections. It can provide immediate documentation as to location of moisture within building components, such as exterior insulated finishing systems (EIFS), framing, windows, etc.

BUILDING ENERGY ASSESSMENTS

Is a fast, efficient tool for conducting energy audits and assessments within buildings. Can locate missing, damaged or wet insulation or address areas where more thermal insulation is needed in order to reduce energy consumption. Inspect steam and hot water piping for insulation breakdown, and proper operation of steam traps and condensate piping.



Thermal image of water leakage around windows.

ROOFING MOISTURE SURVEYS

Indicate roof system leaks and moisture in built up roof assemblies. Utilize in new or existing roof inspections. A fast, efficient, and productive means to address low slope roofing problems and concerns.

ELECTRICAL INSPECTIONS

A non-intrusive evaluation of the condition of electrical power distribution systems, while under load, to indicate loose connections, overheating transformers, disconnects, insulation breakdown, and circuit breaker heating.

WATER RESTORATION PROJECTS - INSPECTION AND MONITORING

Can assist water restoration contractors in documenting drying process and effectiveness of drying methods being utilized. Will provide contractor with third party documentation of the total effectiveness of the drying process.

LEAK DETECTION

Will assist in finding leaks in plumbing, building components, HVAC systems, etc.

If you are having moisture problems in your facility, contact Wynn L. White Consulting Engineers for practical, professional solutions.



**7520 Perkins Road, Suite 180
Post Office Box 83527
Baton Rouge, LA 70884-3527**

**Phone: (225) 761-9141
Fax: (225) 761-4450
Web: www.wynnwhite.com**

CONTACTS:

**Wynn White
Extension 24
wwhite@wynnwhite.com**

**Chris White
Extension 22
cwhite@wynnwhite.com**